

# SONG BOOK

FOR **EMENEE**  
MUSICAL TOYS

FOUR - STRING  
INSTRUMENTS



**GOLDEN**

**FLAMINGO UKE**

WITH

*Arthur Godfrey*

**UKE PLAYER**

# INSTRUCTIONS FOR THE EMENEE GOLDEN BANJO AND PLAYER AND THE EMENEE FLAMINGO UKE WITH ARTHUR GODFREY UKE PLAYER.

## HOW TO TUNE YOUR INSTRUMENT

The instrument is tuned to these notes:

G	C	E	A
4	3	2	1

When holding the instrument in position, the A string will be furthest away from you, while the G string will be closest toward you. For the sake of convenience the strings are also referred to numerically.

## HOW TO TUNE YOUR BANJO BY EAR



THE FIRST STRING IS THE ONE FURTHEST AWAY FROM YOU.

EVERYBODY KNOWS THE OPENING NOTES TO "OLD BLACK JOE".

1. Tighten the third string (not too tight) as the first note to GONE ARE THE DAYS WHEN MY
2. Tighten the second string so that it sounds like the word "ARE"
3. Tighten the fourth string so that it sounds like the word "DAYS"
4. Tighten the first string so that it sounds like the word "HEART"



GONE ARE THE DAYS WHEN MY HEART  
TUNING THE INSTRUMENT WITH THE PIANO OR  
PITCH PIPE

Here are the pitch pipe or piano notes and the corresponding tones on the instrument:





1st String    2nd String    3rd String    4th String

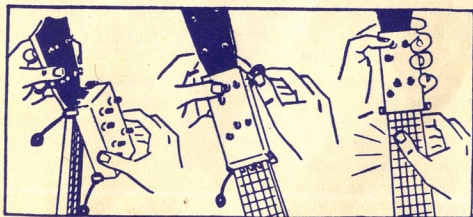
Copyright 1950 Emenee Industries, Inc. Compiled by  
Dean Ross

## HOW TO USE THE PLAYER.

As you probably know, the instrument is an accompanying instrument. You sing a melody and strum the proper chords to give you a musical background.

Under normal procedure you would have to learn these chords by name and master the fingering for each one. All of which is fine, if you want to become an expert player. However, if you'd like to play and not have to study, this Player is for you. Simply press the button bearing the name of the chord you want and strum! That's all there is to it. If you can hum a simple tune you'll be able to accompany yourself on the instrument. No, you won't become an expert on the instrument, nor will you be able to play any song in the world on it, but you will be able to accompany yourself and play thousands of your favorite melodies.

To set up the Player on your instrument, place it over the first five frets as shown in the illustration with the two prongs placed before the nut. Like this:





When you have placed the Player on the instrument as directed, fasten the device securely with the plastic rubber bands. You are now ready to play. Here is a simple melody everyone knows.

[ F  
2 ]

### CLEMENTINE

F F  
OH, MY DAR-LING, OH MY DAR-LING  
F C7  
OH, MY DAR-LING CLEM-EN-TINE  
C7 F  
YOU ARE LOST AND GONE FOR-EVER  
F C7 F  
DREAD-FUL SOR-RY CLEM-EN-TINE.

The only chords involved are F and C7.

So that you will start your song on the proper pitch this indication will be used throughout the book.

[ F  
2 ]

The letter name shows the chord to be depressed.

The numeral shows you what string to pluck to get the first note of your song. Hence, in Clementine, press down the F chord and WHILE IT IS BEING DEPRESSED, pluck the second string and you will hear the starting point of the song.

Now you can start singing and accompanying yourself. Using a felt pick, strum with a downward stroke for every word and syllable you sing. The letter name over the words shows you what button to press down on your PLAYER. Keep it pressed down while strumming and change to the various other chord buttons as indicated over the words of your songs.

Here are thirty of the best known popular songs which never grow old. A knowledge of chord progression as listed on a later page should enable most people who have just a bit of "an ear" to pick out the suitable harmony. As stated before, don't try songs with complex chords. If a song has more than the seven basic chords on your Player, you'll simply have to pass it by. You will find, however, that most songs have only the chords on your Player.



## SPECIAL INSTRUCTIONS FOR THE EMENEE GOLDEN BANJO

The Golden Banjo is a finely engineered musical instrument and with proper use will give you many hours of enjoyment. The drum head on the Banjo is a **GENUINE ANIMAL SKIN** head and must be handled properly.

Before playing the instrument, tighten the eight Acorn nuts with the wrench provided so the drum head will have a reasonable amount of tension. Tighten these nuts a little at a time and be careful not to go over a finger tight tension otherwise you may crack the body of the Banjo or tear the skin. Always use the wrench to tighten; do not use a screwdriver on the head of the screws.

Loosen the head and the strings when storing the Banjo. These heads are of a fine professional quality and as such are subject to changes in atmospheric conditions. As in all professional heads, the manufacturer cannot warranty the drum head. However, if a new drum head is required you may obtain one by sending .75c to the address below.

Tighten the strings with the pegs, as indicated in the song book for the correct tuning. If the friction pegs are too loose, they may be tightened by the screws on the pegs. The nylon strings may take a few days to stretch and assume the final position; after this they will not change in tone.



EMENEE INDUSTRIES, INC.  
41-06 DeLong Street  
Flushing 55, New York

[ F  
2 ]

# LONG, LONG AGO

F  
Tell me the tales that to me were so dear,  
C7 F  
Long, long ago, Long, long ago;  
F  
Sing me the songs I delighted to hear,  
C7 C C7F  
Long, long ago, long ago.  
C7 C7 F  
Now you are come all my grief is removed,  
C7 F  
Let me forget that so long you have roved,  
C7 C C7F  
Let me believe that you love as you loved, Long, long ago, long ago.  
F  
Do you remember the path where we met,  
C7 F  
Long, long ago, Long, long ago?  
F  
Ah, yes, you told me you ne'er would forget,  
C F  
Long, long ago, long ago.  
C7 C7 F  
Then, to all others my smile you pre'fer'd,  
C7 F  
Love, when you spoke gave alarm to each word,  
C7 F  
Still my heart treasures the praises I heard, Long, long ago, long ago.

[ C  
4 ]

# AMERICA THE BEAUTIFUL

C C G7 G7 Gdim\* G7 G7 C Gdim G7  
Oh beautiful for spacious skies, For amber waves of grain.  
G7 C C G7 G7 D7 D7 G7 D7 G7  
For purple mountain majesties Above the fruited plain.  
C G7 G7 G7 C C7  
America, America, God shed His grace on thee,  
F F C F C G7 C  
And crown thy good with brotherhood from sea to shining sea.

\*G diminished chord—Press down C7 and A7 together

[ F  
2 ]

# POLLY-WOLLY-DOODLE

F

Oh, I went down South for to see my Sal,

C7

Sing Polly-wolly-doodle all the day.

My Sally am a punky gal,

F

Sing Polly-wolly-doodle all the day.

Fare thee well, Fare thee well,

C7

C7

Fare thee well my fairy fay, For I'm going to Louisiana,

F

For to see my Susyanna, Singing Polly-wolly-doodle all the day.

F

Oh, my Sal, she am a maiden fair,

C7

C7

Sing Polly-wolly-doodle all the day.

With curly eyes and laughing hair,

F

Sing Polly-wolly-doodle all the day.

[ C  
3 ]

## I'VE BEEN WORKIN' ON THE RAILROAD

C

C7

F

C

I've been working on the railroad all the live long day,

C

C

D7

G7

I've been working on the railroad, Just to earn my board and pay.

C C7

F

C

Don't you hear the engines hummin'? Get up so early in the morn,

F

C D7

C F G7

C

Can't you hear the Fireman shoutin'—Dinah blow your horn.

[ F  
3 ]

## THE FARMER IN THE DELL

F

The farmer in the dell, The farmer in the dell,

C7

F

High oh the cherry oh, The farmer in the dell.

F

The farmer takes the wife, the wife takes the child

C7

F

High oh the cherry oh, The farmer in the dell.



[ C  
4 ]

## THERE IS A TAVERN IN THE TOWN

C

There is a Tavern in the town; in the town,

G7

And there my true love sits him down. Sits him down,

C

C7

F

And drinks his wine 'mid laughter gay and free,

G7

C

But never never thinks of me.

C

G7

C

Fare thee well, for I must leave thee do not let the parting grieve thee,

G7

C

F

C

And remember that the best of friends must part must part

Adieu, Adieu kind friends Adieu, yes, Adieu,

G7

I can no longer stay with you, Stay with yo-o-o,

C

C7

F

I'll hang my Harp on a Weeping Willow Tree,

G7

C

and may the world go well with thee.

[ F  
3 ]

## HOW DRY I AM

F

C7 F

C7 F

How dry I am, How dry I am,

C7

C7

F

Nobody knows How dry I am.

[ C  
4 ]

## ROCK OF AGES

C

F

C

F

C

Rock of Ages cleft for me, Let me hide myself in Thee

G7

C

G7

C

Let the water and the blood, From Thy wounded side which flowed,

F

C

F

G7

C

Be of sin the double cure, Save from wrath and make me pure.

[ C  
2 ]

# SWANEE RIVER

C G7 C C7 F C D7 G7  
Way down upon the Swanee River, Far far away,  
C G7 C C7 F  
There's where my heart is turning ever  
C G7 C  
There's where the old folks stay.  
C G7 C C7 F C D7 G7  
All up and down the whole creation Sadly I roam,  
C G7 C C7 F  
Still longing for the old plantation  
C G7 C  
And for the old folks at home.  
G7 C C7 F C  
All the world is sad and dreary Ev'ry where I roam.  
C G7 C C7 F  
Oh darkies how my heart grows weary,  
C G7 C  
Far from the old folks at home.

[ F  
3 ]

## "COME, THOU ALMIGHTY KING"

F C7 F C7 C7  
Come Thou Almighty King, Help us Thy name to sing,  
F C7 F C7 F  
Help us to praise, Father all glorious, O'er all victorious.  
C7 F  
Come and reign over us, Ancient of Days!

[ F  
2 ]

## LAZY MARY WILL YOU GET UP?

F C7  
Lazy Mary will you get up, will you, will you, will you get up?  
F C7 F  
Lazy Mary will you get up, Will you get up today.  
F C7  
No, no, mother I won't get up, I won't get up, I won't get up,  
F C7 F  
No, no, mother I won't get up, I won't get up today.

[ F  
3 ]

## YOU TELL ME YOUR DREAM

F

D7 G7

I had a dream dear you had one too

C7

F

G7

C7

Mine was the best dream because it was of you.

F

D7 G7

Come sweetheart tell me now is the time

G7

F

D7

G7

C7

F

You tell me your dream and I will tell you mine

[ F  
1 ]

## AFTER THE BALL

F

C7

After the ball is over. After the break of dawn

C7

F

After the dancers leaving, After the stars are gone

F

D7

G7

Many a heart is aching, If you could see them all

C7

F

D7

G7

C7

F

Many the hopes that have vanished after the ball.

[ C  
4 ]

## HOME ON THE RANGE

C

F

Oh give me a home where the Buffalo roam,

C

D7

G7

Where the Deer and the Antelope play,

C

G7

F

Where seldom is heard a discouraging word.

C

G7

C

And the skies are not cloudy all day.

C

G7

C

Home, home on the range,

C

D7

G7

Where the Deer and the Antelope play;

C

C7

F

Where seldom is heard a discouraging word.

C

G7

C

And the skies are not cloudy all day.



[  $\frac{C}{4}$  ]

# LITTLE BROWN JUG

$\frac{C}{4}$                       F                      G7                      C                      C  
 My wife and I lived all alone,      In a little log hut we call'd our own;  
 $\frac{C}{4}$                       F                      G7                      C  
 She loved gin and I loved rum,      I tell you what we'd lots of fun.  
 $\frac{C}{4}$                       F                      G7                      C      G7      C  
 Ha! ha! ha! you and me "Little Brown Jug," don't I love thee!  
 $\frac{C}{4}$                       F                      G7                      C  
 Ha! ha! ha! you and me "Little Brown Jug," don't I love thee!  
 $\frac{C}{4}$                       F  
 'Tis you who makes my friends and foes,  
 $\frac{C}{4}$                       C      G7      C  
 'Tis you who makes me wear old clothes,  
 $\frac{C}{4}$                       F                      G7                      C  
 Here you are so near my nose,      So tip her up and down she goes.

[  $\frac{C}{4}$  ]

# THE OLD GRAY MARE

$\frac{C}{4}$   
 The old gray mare she ain't what she used to be  
 $\frac{C}{4}$                       C  
 Ain't what she used to be, Ain't what she used to be  
 $\frac{C}{4}$   
 The old gray mare she ain't what she used to be  
 $\frac{C}{4}$                       C                      F      C                      F      C  
 Twenty-five yrs. ago, Twenty-five yrs. ago, Oh—Twenty-five yrs. ago  
 $\frac{C}{4}$   
 The old grey mare she ain't what she used to be  
 $\frac{C}{4}$                       C  
 Ain't what she used to be, Ain't what she used to be  
 $\frac{C}{4}$   
 The old grey mare she ain't what she used to be,  
 $\frac{D7}{4}$                       G7      C  
 Twenty-five years ago.

[ C  
4 ]

# SILENT NIGHT

C C G7 C  
Silent night, Holy night, All is calm, All is bright,  
F F C C F C  
Round yon Virgin Mother and Child, Holy Infant so tender and mild,  
G7 C C G7 C  
Sleep in Heavenly peace, Sleep in Heavenly peace.

[ F  
3 ]

# BIRMINGHAM JAIL

F C7 C7 F  
Write me a letter, Write it today, Stamp it tomorrow, Send it away.  
F C7 C7 F  
Write me a letter, Send it by mail, Send and direct it, to Birmingham Jail

[ C  
4 ]

# SHE'LL BE COMIN' 'ROUND THE MOUNTAIN

C  
She'll be comin' 'round the mountain, When she comes;  
G7  
She'll be comin' 'round the mountain, When she comes;  
C C7  
She'll be comin' 'round the mountain,  
C7 F  
She'll be comin' 'round the mountain,  
C G7 C  
She'll be comin' 'round the mountain, When she comes.  
C C  
She'll be drivin' six white horses, When she comes;  
G7  
She'll be drivin' six white horses, When she comes;  
C C7  
She'll be drivin' six white horses,  
F D7  
She'll be drivin' six white horses,  
C G7 C  
She'll be drivin' six white horses, When she comes.

[ F  
3 ]

# HINKY DINKY PARLEE VOO

F

C7

The Americans went over the top, Parlee voo,

F

The Americans went over the top, Parlee voo,

C7

F

C7

The Americans went over the top, To put the Kaiser on the rocks,

G7 C7 F

Hinky dinky parlee voo.

[ F  
2 ]

# ROW, ROW, ROW YOUR BOAT

F

Row, Row, Row your boat, Gently down the stream;

F

Merrily, Merrily, Merrily, Merrily, Life is but a dream.

[ F  
1 ]

# THREE BLIND MICE

F

C7

F

C7

F

F

C7

F

Three blind mice, Three blind mice, See how they run!

C7

F

C7

F

See how they run! They all ran after the farmer's wife;

C7

F

She cut off their tails with a carving knife;

C7

F

C7

F

C7

F

Did you ever see such a sight in your life, As three blind mice.

[ F  
3 ]

# THE MAN ON THE FLYING TRAPEZE

F

C7

He flies through the air with the greatest of ease,

C7

F

The daring young man on the flying trapeze,

F

C7

His movements are graceful all girls does he please

C7

F

And my love he has stolen away.



## HOW TO ACCOMPANY SONGS "BY EAR"

You don't have to be a genius to get the right chords to your melodies. Of course a good ear helps but almost anyone who can carry a tune can learn a few simple chord progressions to amuse himself.

Every song has chords that are related. The BANJO PLAYER is constructed so that the related chords of the Key of C or F can be used quickly and easily.

Here is a simple rule that will help:

When you play G7 and you feel a Chord Change use C or C7  
" " " D7 " " " " " " " G7  
" " " A7 " " " " " " " D7  
" " " C7 " " " " " " " F

Play the following chord progressions until you get them with ease and without looking at the buttons:

C-G7-C	D7-D7-G7-G7-C	C-C-A7-A7-D7-D7-G7-G7-C
G7-G7-C	C-C-D7-D7-G7-G7-C	C-A7-D7-G7-C
C-F-C	C-D7-G7-C	F-F-A7-A7-D7-D7-G7-G7-C
C-F-G7-C	C-C-C7-C7-F-G7-C	C-F-F-C-A7-D7-G7-C
F-F-G7-G7-C	F-F-G7-G7-C7-C7-F	A7-D7-G7-C

The above chord progressions are typical of countless folk songs, popular songs and hymns.

There is one more chord available on the BANJO PLAYER. It is the G diminished chord. It is written G dim. It is played by depressing the C7 and the A7 together at the SAME TIME.

C-C-Gdim-Gdim-G7-G7-G7-G7-(Repeat several times)

You will recognize it as a famous vamp (introduction). Wherever it is used it always precedes a G7 chord.

### THIRTY STANDARD SONGS

Blue Room C*	Chinatown C	Marie F
Chloe G7	Exactly Like You C	My Blue Heaven C
Sweet Sue G7	Honeysuckle Rose G7	Pagan Love Song F
Stormy Weather C	It Had To Be You C	Sleepy Time Gal C
Dreams of Love F	Ja-da F	The Sheik F
Who's Sorry Now F	Linger Awhile F	Miami Shore F
At Sundown G7	Margie C	Oh How He Lied F
I'm Confessin' C	By The Light Of The Silvery Moon C	
Shine On Harvest Moon D7	You Are My Sunshine C	
Sunny Side Of The Street C	Alexander's Ragtime Band C	
I Can't Give You Anything But Love C		

\*The name of the chord which starts the song is given after each title.

# How To Play From Sheet Music

Practically all sheet music has chord names printed over the melody.

The average song usually demands no more than the six basic chords given on the Banjo Player. To use them for sheet music, however, it will be necessary for the song to be transposed to the Key of C.

To do this the following chart will be helpful.

At the beginning of every song you will find a G clef. Immediately after the G clef the key signature appears.



You will see one of the following:



To transpose to the Key of C to accommodate the Banjo Player, first find out what key the song is in. Then, keeping your eye in that line below you will see the chord given in the sheet music and immediately following the chord to use on your banjo player.

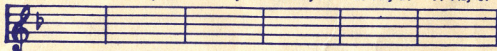
Key of  
C no #'s  
or b's  
Play Chords  
you see

C      G7      F      A7      Am Play D7      Gm Play C7



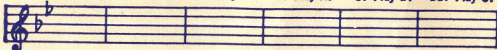
Key of F  
1 Flat

F Play C      C7 Play G7      Bb Play F      D7 Play A7      G7 Play D7      F7 Play C7



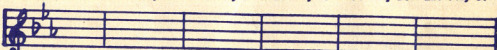
Key of Bb  
2 Flats

Bb Play C      F7 Play G7      G Play F      G7 Play A7      C7 Play D7      Bb7 Play C7



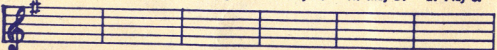
Key of Eb  
3 Flats

Eb Play C      Bb7 Play G7      Ab Play F      C7 Play A7      F7 Play D7      Eb7 Play C7



Key of G  
1 Sharp

G Play C      D7 Play G7      C Play F      E7 Play A7      A7 Play D7      G7 Play C7



**NOTE:** Try to use only one chord to the measure. In many cases chords not given on the Banjo Player may be omitted without disturbing the basic harmony of a song.

Some songs are too involved harmonically to be played with the Banjo Player. These will simply have to be eliminated from the player's repertoire.

If the song is too high for a singer's range, retune banjo so that it sounds lower.

In some songs, the Key of F may be used without transposing unless a Bb chord is encountered. In such case try Key of C.

# Golden Trumpet

with mellow tone MUTE



# Ebony and Silver Clarinet



# Silver Saxophone



EMENEE  
MUSICAL TOYS

EMENEE  
MUSICAL TOYS

# Golden

S-L-I-D-E

# Trombone



# Golden

# Tuba



# Golden Glockenspiel



EMENEE INDUSTRIES

EMENEE  
MUSICAL TOYS

200 Fifth Ave., New York 10